

Vote Trading and Information Aggregation

Susan E. K. Christoffersen
McGill University and CIRANO

Christopher C. Geczy
University of Pennsylvania

David K. Musto
University of Pennsylvania

Adam V. Reed*
The University of North Carolina

This Version: January 20, 2005

*Correspondence to Susan Christoffersen, Faculty of Management, McGill University, 1001 Sherbrooke St. West, Montreal, Quebec Canada, H3A 1G5; Tel 514-398-4012, E-mail susan.christoffersen@mcgill.ca. The authors thank Renée Adams, Jonathon Karpoff, Randall Meades, Felix Meschke, Micah Officer, Ralph Walkling and other sources who prefer to remain anonymous, and seminar participants at American University, CEPR-SITE conference, CIRANO, Columbia University, Erasmus University, the Federal Reserve Bank of Atlanta, 15th annual Finance Economics and Accounting Conference, Goldman Sachs Asset Management, INSEAD, McGill University, McMaster University, Michigan State, Queen's University, Securities and Exchange Commission, Tilburg University, University of Amsterdam, University of British Columbia, University of Houston, University of Illinois, University of Toronto and Wharton for helpful advice and comments. We are grateful for financial support from SSHRC, FQRSC, IFM2 and the Rodney L. White Center for Financial Research and for research assistance from Lisa Huang, Eric Turner, Victoria Von Krause and Michelle Zhang.

Vote Trading and Information Aggregation

ABSTRACT

The standard analysis of corporate governance is that shareholders vote in the ratios that firms choose, such as one-share-one-vote. But if the cost of unbundling and trading votes is sufficiently low, then shareholders vote in the ratios that they themselves choose. We document an active market for votes within the equity-loan market, where we find that the average vote sells for zero. We hypothesize that asymmetric information motivates these vote reallocations, and we find support for this view in the cross section of votes: there is more trade for higher-spread firms and more for poor performers, especially when the vote is close. We also find that the vote reallocations correspond to support for shareholder proposals and opposition to management proposals.

“Within hours of a crucial vote, British Land attacked the credibility and methods of dissident shareholder Laxey Partners, revealing that it had borrowed 90% of the shares with which it will vote at today's annual meeting ... British Land chairman John Ritblat is furious but will not be able to stop Laxey voting against him.”¹

“At least ward heelers used to pay real money for the votes they bought. Hedge fund Perry Corp. has figured out a way [to] buy votes to sway a takeover battle in which it has a stake – and then get a full refund. Lawyers say it all appears perfectly legal, but should it be?”²

If shareholders could trade their voting rights, what would they do? The economic, legal and finance literatures all offer theoretical analyses of corporate vote trading, but aside from anecdotes, no empirical evidence on what actually occurs. The goals of this paper are first to provide such evidence and then to offer and test an explanation for what we find.

Votes are the direct control of public firms by the public, so the nature of this control can turn on whether votes trade. And while an additional trading opportunity might seem obviously beneficial, existing work is mixed on the benefits of the opportunity to trade votes. Because vote trading unties control rights from cash-flow rights, it jeopardizes the efficiency gains of tying one share to one vote (Grossman and Hart, 1988, and Harris and Raviv, 1988). Similarly, an investor's desire to buy votes alone rather than votes plus cash-flow rights might signal an objective other than shareholder value (Cole, 2001). Also, the equilibrium market price of a vote may be small even if its value without trading is large, because if the buyer is expected to acquire enough votes to prevail even without a shareholder's vote, that vote is worth nothing to anybody (Grossman and Hart, 1988). On the positive side, vote trading can restore efficiency when capital-gains taxes discourage share trading (Blair, Golbe and Gerard, 1989) and may alleviate the free-rider problem of Grossman and Hart (1980) by allowing better management to buy control without paying their value-added by buying shares (Neeman and Orosel, 2003) rather than relying on large shareholders to monitor firms (Shleifer and Vishny, 1986 and Maug, 1998).

¹“British Land slams shareholder Laxey”, Sarah Marks, *Evening Standard*, July 16, 2002.

²“Icahn Cries Foul at Perry's No-Risk Play in Takeover Fight”, Jesse Eisinger, *Wall Street Journal*, December 15, 2004, p C1.

As the above examples illustrate, analyses of vote trading focus on a particular scenario, one where shareholders choose between competing teams of firm managers whose public and private values are common knowledge. In this scenario, votes aggregate voters' preferences arising from their exposures to these values. This is a manifestly important scenario to understand, but votes can aggregate more than preferences. In particular, votes can aggregate dispersed information about the values of the competing outcomes, and this aggregation could also be important to the vote trade (Maug, 2004). Since the dispersion of information can be a poor match to the dispersion of shareholdings, vote trading can improve the aggregation of this information. The causes and consequences of vote trading are thus a key and open question.

The obstacle to addressing this question has been the lack of relevant data. We overcome this obstacle by turning, as suggested by Harris and Raviv (1988), to the equity-loan market. Since equity loans transfer ownership without economic exposure, and since votes accrue to record-date owners, record-date equity loans are well-suited for the vote trade. In two large databases from the equity-loan market we can observe both the prices and the quantities of these vote trades for a wide cross section of U.S. firms. To characterize the economic role of the trades, we relate them to the cross section of the proposals at stake, the circumstances of the firms and the votes' outcomes.

Our first, basic, result is that the lending market does in fact host a vote market. This is readily apparent in Figure 2, which contrasts loan volume on voting record dates with volume on surrounding dates, showing a record-date spike. Considering this first result, our second result is a surprise: the average vote sells for zero. This can be seen in Figures 3 and 4, which contrast loan *pricing* on voting record dates with pricing on surrounding dates, as reported by the two databases, showing zero record-date movement. Thus, the lenders are not so much selling these

votes as yielding them. Since shareholders are likely better off voting their interests than giving their votes away, we propose a hypothesis: vote trading is motivated by asymmetric information. Shareholders do not know *how* to vote their interests, and are taking their chances that the votes transfer to investors who *do* know how and who share their preferences. This is similar in spirit to the “swing voter’s curse” identified in the political context (Feddersen and Pesendorfer, 1996), but with the additional tactic of yielding available in the corporate context.

The asymmetric-information hypothesis makes testable predictions for the cross section of votes. Most directly, vote trading should increase with asymmetric information. We take this to the data by proxying with the firm’s bid/ask spread, and Figure 5 shows the result: as the spread goes up, so does vote trading. Also, the benefit of yielding votes to better-informed investors increases with the importance of the proposal at stake, so vote trading should as well. By contrast, if information were symmetric then the incentive to yield a vote would *decrease* as it became important; there would be nothing to gain but, to the extent preferences differ, more to lose. What we find, with a variety of proxies, is a robust increase: vote trading is greater for poor performers, whether we look at accounting or market performance, and among these poor performers, it is greater when the voting outcome is closer. Also, as management becomes more entrenched, trading for shareholder proposals goes up, whereas trading for management proposals goes down, a contrast we relate to recent findings on corporate governance.

The ultimate significance of the vote trade lies in how the votes are cast. We cannot observe this directly but we can observe how vote trading relates, in the cross section, to outcomes. We find that the relation is consistently against management: vote trading correlates with support for shareholder proposals and opposition to management proposals, both in the fraction of votes cast and in the likelihood that the proposal wins.

The rest of the paper is in five sections. Sections I and II cover the background and the data. Section III provides the basic results on prices and quantities of vote trades, Section IV relates vote trading to the cross section of firms, proposals and outcomes, and Section V summarizes and concludes.

I. Background

I.A Overview of Vote Trading

Shares tie voting rights to cash-flow rights, but only for a moment – the market close of the record date. Ownership the moment before or the morning after is irrelevant. So even with no financial engineering, a market for votes is feasible, analogously to the market for dividends. If one group sells at the cum-date close and buys back at the ex-date open, and another group does the opposite, then they have successfully traded votes, plus an overnight of economic exposure. If options are available, this exposure could be hedged with puts and calls. But while this is all feasible, it may not be economical. Market makers must charge for the possibility that trades of economic exposure are adversely selected (Bagehot, 1971), so the combined transactions costs of one side selling and buying and the other side buying and selling, plus the hedges, could be prohibitive.

The efficient solution to the transactions-cost problem is the equity loan. Equity loans convey no economic exposure, so market makers have no reason to charge for adverse selection when borrowing from the first group or lending to the second. In fact, votes are the only thing that loans *do* convey, since shares are returned and dividends reimbursed.³ Loans therefore

³ Though dividends are reimbursed, they can be worth more to the borrower than to the lender (Christoffersen, Geczy, Musto and Reed, 2004).

reduce the transaction to its bare essentials, so as Harris and Raviv (1988) observe, the equity-loan market is a logical host for the vote market.⁴

Equity loans solve the trading cost problem but they may risk regulatory intervention, at least in the U.S. Most immediately, trading votes separately from their underlying interests can be illegal (Manne, 1964, and Easterbrook and Fischel, 1983). However, case law dating to *Schreiber v. Carney* (447 A.2d 17, Del. Ch. 1982) in 1982 has considerably narrowed the circumstances where it can be found illegal, and since then (as of 2001), “courts have not struck down a single instance of alleged vote buying,” (Cole, 2001, p. 798). Summarizing the courts’ decisions, Cole (2001) concludes that a vote trade is legal unless 1) the vote-seller gets a legally-enforceable consideration, 2) the consideration is the main reason for how the vote-seller votes, and 3) the seller must cast his vote in a particular way. Since the record-date lender never possesses or casts the vote, it is unclear whether equity loans are at all susceptible to failing this test, but it could be a risk that traders consider.⁵

Another regulatory obstacle to vote borrowing is that not everybody can borrow shares in order to be their temporary owner. Regulation T requires non-exempt traders to have a “permitted purpose” to borrow, where a permitted purpose is a short sale or failed delivery (12 CFR 220.10(a), and see also Fabozzi (1997), pp 104-5). An investor hoping to borrow shares to be their temporary owner would have to construct a permitted purpose, for example by shorting

⁴ Also, lenders know whether a loan conveys votes because issuers must tell brokers and other intermediaries about voting record dates 20 days in advance (§240.14a-13(a)).

⁵ In reference to the Perry Capital case in the press clipping above, the same *Wall Street Journal* article reports “‘You could always buy votes – it’s perfectly legal,’ says a person allied with Perry. ‘Richard Perry could have given every shareholder a dime and said give me your vote.’ Indeed, some securities lawyers say the transaction appears to be legal.” However, Carl Icahn is suing Perry over the transaction.

to himself. After April 1, 1998 Regulation T became less binding, as broker/dealers servicing large numbers of retail accounts were exempted from this permitted purpose rule.⁶

In other economies, such as Canada and the U.K., there is no permitted purpose law so evidence of a voting market in the US would strongly suggest that similar markets operate elsewhere. In fact, the practice of vote trading has been publicly acknowledged, at least anecdotally, in the U.K. The two salient cases are British Land, referenced in the press clipping at the top of this paper, and P&O Princess.⁷ These events have provoked recent deliberation by the Bank of England's Stock Lending and Repo Committee.⁸

The regulatory restrictions on vote *lending* are relatively loose. Brokers can lend their customers' shares on voting record dates, and wind up with fewer votes to cast than their customers own. This runs the risk that customers' voting instructions exceed their brokers' voting capacity, but this leads to no punishment of the brokers (SEC, 1991, p. 30), who need only to map instructions to votes as they see fit (SEC, 1991, pp. 28-9, and see also Apfel et al. 2001). Pension funds must, under ERISA, retain the right to terminate a loan for the vote or for anything else (D'Avolio, 2002), but they need not exercise this right.

Finally, there is an extensive literature that gauges the value of a vote by comparing the value of dual class shares with and without voting rights (for example, see Zingales (1994, 1995)). This has been a fruitful line of research but as DeAngelo and DeAngelo (1985) observe,

⁶ Under the new amendments to Regulation T on April 1, 1998, a broker/dealer was considered exempt if: 1) the broker/dealer had 1,000 active accounts for persons other than brokers, dealers, or persons associated with a broker/dealer; or 2) the broker/dealer had \$10 million in annual gross revenues from transactions with such persons; or 3) The broker/dealer derives 10 percent of its annual gross revenues from transactions with such persons. See <http://www.nasdr.com/pdf-text/9843ntm.txt>.

⁷ In the P&O Princess case Mr. Defriez had identified a risk that voting of borrowed stock at an extraordinary general meeting to approve the merger with Carnival under a dual listed company structure could potentially lead to an outcome against the wishes of the long-term shareholders. Also he had reason to believe that some borrowers of P&O Princess stock might be planning to tender it into Carnival's partial share offer, which is for up to 20% of shares in P&O Princess, potentially crowding out long-term shareholders. (See Footnote 6 for reference)

⁸ <http://www.bankofengland.co.uk/markets/slrdec02.pdf>

the few firms choosing dual classes are bound to have unusual voting and governance concerns. The key to our methodology is that we consider all firms and thus have no such bias.

I.B The Equity-Loan Market

Three features of the equity-loan market are important to our analysis.⁹ The first is that equity loans, which settle same-day, transfer ownership of record. Thus, record-date loans redirect votes to whomever winds up with the shares. The second is that borrowers do not reimburse votes to lenders, so the investor who gets them can keep them. The third feature is that equity loans are priced through interest-rebate reductions. Borrowers provide cash collateral, and lenders rebate some of the interest they earn on it. For most stocks the rebate rate is the same rate, known as the *general collateral* rate, but for some stocks the rate is lower. These stocks are said to be *on special*, and the shortfall of their rebates from the general collateral rate is their *specialness*. Thus, the relative pricing of equity loans is apparent in their relative specialness. A stock is more expensive to borrow on a given date, such as a voting record date, if and only if its specialness is higher on that date.

II. Data

We combine data from several sources. First, there are two proprietary databases. One, which we call here the “custodian” database, is the same database used in Reed (2002) and Geczy, Musto and Reed (2002), where it is described in more detail. The database contains the rebate rate, size, start and termination date and a few other statistics of all loans, about a quarter million, of U.S.-listed equities made by a large custodian bank, acting as lending agent for its

⁹ For a more thorough description of the equity-loan market, readers are referred to D’Avolio (2002), Geczy, Musto and Reed (2002), Fabozzi (1997), and Duffie, Garleanu, and Pedersen (2001).

custodial clients, between November 1998 (11/98) and 10/99. For our purposes here the important database-specific facts are that the specialness implicit in a loan is observable only if the data provider considers the loan to be Medium or Large, rather than Small¹⁰, and that the rebates are wholesale rates charged to brokers, as opposed to the retail rates the brokers charge their customers. So we do not observe the complete cross section of specialness every day – on the typical day, we observe the specialness of about 3,200 stocks – and what we observe is a lower bound on the cost to the end-user, most representative of the cost to major investors such as large hedge funds. Similarly, it is an upper bound on the revenue accruing to the loaned shares' beneficial owner. Specialness is quoted as an annual interest rate. For example if the specialness of a stock is 3%, and an investor borrows \$1MM worth of it for 5 calendar days, then his specialness cost (with 102% collateral) is $(3/100)(5/360)(\$1MM)(1.02) = \425 .

The other proprietary database, which we call here the “prime broker” database, contains rebate rates for a larger cross-section of firms, including all firms listed on the Russell 3000, but it does not have quantities loaned. This data comes from a large prime brokerage, and it is the same data used in Evans, Geczy, Musto and Reed (2003), which describes it in more detail.

We match the proprietary data with publicly available information from the CRSP, Compustat, TAQ, and IRRC (Investor Responsibility Research Center) databases. CRSP provides trading volume, shares outstanding, and stock performance relative to industry (equal-weighted index of firms with the same two-digit SIC code) for the year November 1997- October 1998. From Compustat we gather senior bond ratings as of September 1998, which we compare

¹⁰ The specialness implicit in a cash-collateral loan is defined as the GC rate for the loan's size minus the loan's rebate rate (annualized), *if* the loan is Medium or Large. If the loan is Small, it is not used for calculating specialness. For non-cash-collateral loans the specialness is defined as the lending fee minus 20bp. The specialness of a stock on a given day is the value-weighted average of the specialness of all Medium and Large loans of the stock that day. These calculations are identical to those in Geczy, Musto and Reed (2002); see that paper and Reed (2002) for more discussion.

to the median senior bond ratings for the firms' respective industries (two-digit SIC). And from TAQ we get closing bid/ask spreads: for each exchange-traded stock, *CLSPRD* is the average October 1998 official closing spread, divided by the October 30, 1998 closing bid/ask midpoint.

The most significant matching is with the IRRC data (Maug and Rydqvist, 2004). From IRRC we have 16,961 pairs of CUSIPs and voting record dates from 11/98 through 10/99. Of these, 6,186 are both in the CRSP data and covered by ten trading days before and after within the sample period of the custodian data. This sample of 6,186 is trimmed significantly when we match with the voting outcomes data associated with these record dates. From IRRC we have 1,886 firm and record date non-routine proposals of which 1,818 matched with our data. Note that because these proposals are non-routine, their outcomes do not include broker votes (Bethel and Gillan (2002)). Another 21 observations were removed because the vote was either incompletely recorded by the IRRC, or canceled. The voting outcomes data includes a basic description of the proposal and an indicator of whether it is a management or shareholder proposal. It also lists the votes for, against, abstaining, and required for approval as a percent of either total votes cast or total shares outstanding as dictated in the proxy. A vote "for" is a vote in favor of the proposal. We use this data to flag close votes; if the vote for proposal i is within 5% (on either side) of the vote necessary, then $CLOSE_i$ is 1, and otherwise it is 0. By this rule, 88 of the votes are close.

We also use the corporate governance index calculated by Gompers, Ishii, and Metrick (2003) from IRRC data. This index takes on integer values up to 16 where a higher number indicates a weaker corporate governance structure. The data is reduced to 1,542 proposals when matched with this indicator.

Following Karpoff, Malatesta, and Walkling (1996) we group proposals by their descriptions into three subsets: External, Internal, and Compensation. External proposals refer to the company's interactions with other companies, such as mergers and acquisitions, poison pills, spin-offs, supermajority provisions and the sale of the firm. Internal proposals relate to the internal operations of the company, such as elections of directors or board members, amendments to governance procedures and changes to voting rights of directors/board members or to committee structure or composition. Compensation proposals are those related to payments to directors or executives, such as adopting a bonus plan or amending a stock option/award/bonus plan, excluding stock option plans for employees in general. The only difference between our classification and that used in Karpoff, Malatesta, and Walkling (1996) is the inclusion of spin-offs and firm sell-offs as external issues. This classification also reflects the factors Pozen (1994) highlights as influencing institutional activism: antitakeover measures, executive compensation, and governance structures. Proposals regarding name changes or changing authorized common stock were classified as "other."

Finally, for U.K. firms we have data on aggregate loan quantity from CRESTCO, the U.K. clearing firm. For each firm in the FTSE 250 and 100 we have the total number of shares in CRESTCO (generally the vast majority of the firm's shares outstanding), and the total number of shares loaned. This data runs daily from September 1, 2003 through November 30, 2004. Meeting dates for U.K. firms come from the Institutional Voting Information Service, as does the breakdown between Annual and Extraordinary General Meetings. The official list of voters for a U.K. meeting derives from ownership two days before (Regulation 41 of the Uncertificated Securities Regulations 2001), so we take the record date for a meeting to be the last trading date on or before two days prior.

III. The market for votes

In this section we address the basic empirical questions: do investors trade votes, and if so, at what price? We start with the spot market, and then move on to the lending market.

III.A Trading Votes in the Spot Market

The spot market trades economic exposure along with votes, but traders who want just votes might still transact there. They must pay the spread but the only economic exposure they need to bear is overnight; they could buy at the close of the cum-date and sell at the open of the ex-date. We cannot address the question of whether such trades *ever* occur but we *can* address whether their incidence is high enough to boost the stock's trading volume above its prevailing level.

Our method is to compare trading volume on the cum-date to the twenty days on either side. To be consistent with the lending results below, our sample is all cum-dates in the IRRC data from 11/11/98 to 10/12/99 (this way, the settlement dates for trades 10 days before or after fall between 11/01/98 and 10/31/99, our custodian-data sample period). This yields 6186 record dates. For every record date i , let $V_{i,t}$ be the relevant stock's percentage trading volume on date t , where date 0 is defined as the cum-vote date, i.e., 3 trading days before the record date, and percentage trading volume is shares traded divided by shares outstanding. For every t we average $V_{i,t}$ across i ; the result is presented as Figure 1.

Figure 1 shows no sign of a relation between trading volume and voting rights. The average is 0.65% across all 21 days, and is 0.66% on the cum-vote date and 0.64% on the ex-vote date. We cannot rule out that some traders find the spot market economical for exchanging votes but the incidence of such exchanges must be small.

III.B Trading Votes in the Lending Market

We can easily change venue to the lending market by repeating the above procedure on the same 6186 record dates, replacing percentage trading volume in the spot market with percentage lending-volume by our custodian-data provider, while offsetting three days to align the markets. That is, we replace $V_{i,t}$ with $L_{i,t}$, the number of shares loaned by the custodian, divided by shares outstanding, on trading date t , where date 0 is now the record date, *not* the cum-date. We again average across i for each t , and the result is in Figure 2.

The connection between voting and lending is clear and strong. Loans that convey votes are in much greater quantity than loans in general; loaned shares spike from 0.21% on average to 0.26% on the record date, a difference that is far beyond the prevailing volatility. Because each loan separates votes from economic exposure, one might have expected *less* lending on record dates, because this moves corporate control toward one-share-one-vote. But we find *more* lending, moving control *away* from one-share-one-vote. So the lending market does in fact host a voting market.

III.C The Price of a Vote

What price do the borrowers pay for the votes? We can find out by replacing loan quantity L with loan pricing P , which as discussed above is in units of specialness. We let $P_{i,t}$ be the average specialness of the loans that comprise $L_{i,t}$, and analogously to before we take the average of $P_{i,t}$ across i for each t and plot the time series. This is somewhat noisy, compared to the time series above, because some stocks loan on some of the days but not others, so the sample changes slightly as t goes from -10 to 10. The result is in Figure 3.

The figure shows no price increase at all, but because the comparison across t is not exactly apples-to-apples, it is worth constructing a comparison that is. We identify all the record dates such that we observe specialness on the record date *and* on at least one of the twenty surrounding dates. There are 2019 such dates. For each record date we then subtract the average non-record-date specialness from the record-date specialness, and find the average difference to be 0.6bp. That is, the extra cost of borrowing a share when it conveys a vote, compared to when it does not, is a 0.6bp decrease in the interest received on the collateral used to borrow the share. The standard error of the 0.6bp is 0.4bp, so it is not significantly greater than zero, and we can reject that the true difference is greater than 2bp, which itself would be trivial (note that these are annualized rates, so a 2bp interest-rate reduction for one day implies \$0.56 less income on \$1MM of collateral).

One possible objection to this test is that the firms our data provider loans may be biased toward firms whose votes are less interesting. For example, GMR show that this database often does not include merger acquirers. To address this concern we repeat the test on a different database with no possibility of sample bias. This is the prime-broker data described above, which is unbiased because it gives the specialness every day for *all* the 3000 largest U.S. stocks, *whether or not* the stocks actually loan out. We repeat the procedure above with the $P_{i,t}$ from the custodian database replaced by the $P_{i,t}$ from the prime-broker database. The result is in Figure 4.

The prime broker data show the result to be robust. The average vote can be had for nothing, or more precisely, for the usual price of shorting the relevant stock. Specifically, the average specialness is 14.5 bp on the record date and 13.7bp on the other dates, so the difference is 0.8bp and it is not statistically or economically significantly different from zero.¹¹ From this

¹¹ Results for the subsample of merger firms (the merger sample from GMR) match those for the full sample. Loan volume (in the custodial data) is significantly higher on the voting record date, for both targets and acquirers, but

we conclude that lenders are yielding, rather than selling, their votes. Since this can only make the lenders worse off if they already know how to vote in their interests, we further hypothesize that the voting market is driven by asymmetry of information. In the next section we take this hypothesis to the cross section of vote transactions.

IV. Cross Section of the Market for Votes

The results of the previous section are a puzzle. Why would someone give away his votes? We hypothesize that he does not know how to vote, and gives the decision away on the hope that the recipient both shares his preferences and knows how to vote them. The goal of this section is to test this hypothesis on the cross section of vote lending. The first subject of the tests is asymmetric information. If asymmetry of information is indeed the motive for lending, then lending should increase with it. This is a relatively straightforward test since we can observe a widely accepted proxy for asymmetry of information about the firm, the bid/ask spread posted by its market maker.

The next set of tests addresses the relative gravity of the votes. There is little motive to lend trivial votes; the market is presumably driven by the important votes. Thus, if lending reflects asymmetry of information, it should grow as the vote grows more important. By contrast, if shareholders were *symmetrically* informed, we would expect lending to *shrink* as importance grows: borrowers would have no information to add, and might have different preferences, so the risk would be all downside and would be larger for more important votes.

To take this hypothesis to the cross section of votes, we need measures of their relative importance. Relative importance could reflect the significance of the issue at stake, and it could

specialness (in the prime-broker data) is not. For targets, specialness is 2bp lower on the record date (statistically significant), and for acquirers it is 3bp lower (not statistically significant).

also reflect the probability that a given vote will be pivotal. Proxying for this probability is straightforward, because we can, for the larger firms whose outcomes are reported by the IRRC, simply look at how close the vote turned out to be.

Proxying for the relative importance of proposals is trickier because the literature provides little guidance as to which proposals are more important. The existing theory on vote trading, Harris and Raviv (1988) and Blair, Golbe and Gerard (1989), focuses on managerial performance, so we proxy for performance, in two ways: stock return, relative to industry, and bond rating, relative to industry. This gives us one proxy keyed to market prices, and one keyed to accounting data. As performance decreases, the importance of the firm's proposals should increase and so, by the hypothesis, should the transfer of votes.

A potential objection to interpreting the cross section of record-date equity loans as driven by the cross section of votes is that the cross section of loans generally reflects the cross section of short-selling, which could be influenced by similar forces. For example, recent performance could affect both demand for short exposure and the value of votes. To avoid this confusion, we focus exclusively on *excess* record date lending, defined in accordance with the previous section as the loan volume on the record date minus the average loan volume on the twenty surrounding days. This way, we remove the prevailing demand for short exposure and focus exclusively on the conveyance of votes. To allow comparability across regression models, all the regressions are limited to observations covered by the voting-outcomes data.

III.A Relation to Asymmetric Information and Importance of the Vote

Since a market maker's bid/ask spread for a firm's equity is generally viewed as a product of asymmetric information about the firm – in particular, the incidence of trading by investors who know more about the firm than he himself knows (Bagehot, 1971, Glosten and Milgrom, 1985, etc.) – it is the natural proxy for the uneven distribution of information about the firm. Because outside factors could simultaneously affect both spreads and lending, we avoid confusion by measuring spreads over the month before our loan sample begins.

To gauge the relation between spreads and lending, we first sort by closing spread into quintiles, with the lowest-spread stocks in quintile 1. We then calculate the average excess record-date lending for each quintile, and plot the result as Figure 5.

The relation in Figure 5 is strong in the predicted direction. Vote trading grows as asymmetry of information grows. To establish the statistical significance of the relation, we regress excess record-date lending, denoted by $XLOAN_i$ for record date i , on spreads, denoted by $CLSPRD_i$, and test whether the slope is significantly positive. The fitted model, labeled REG1 in Panel A of Table I, shows that the slope is positive with a t-statistic of 2.44, so the relation is indeed significantly positive. This supports one dimension of our hypothesis that the maldistribution of information is an important incentive to yield votes.

The other dimension is the importance of the vote. This in turn has two components: the importance of the proposal, and the probability that a given share's vote will be pivotal. For the importance of the proposal we have two measures of underperformance by the firm: low stock return and low bond rating, relative to industry. The indicator $UPERF_i$ is 1 if firm i underperformed its industry over the year ended 10/98, and is 0 otherwise, and $URATE_i$ is 1 if firm i 's bond rating was below the median rating for its industry, and is 0 otherwise. Thus we

have one measure reflecting market valuations, and one reflecting accounting data. For the probability that a share's vote will be pivotal we have the closeness of the vote, as revealed later at the meeting. We take proposal i to be close, and thus set $CLOSE_i$ to 1, if the vote for the proposal was within 5% of the vote needed for passage. Otherwise, $CLOSE_i$ is 0.

The question is whether $CLOSE$, $UPERF$ and $URATE$ relate positively to vote trading, and we address this question with dummy-variable regressions where the dependent variable is again $XLOAN$. We first run simple regressions on the three explanatory variables separately, then we run multiple regressions that interact $CLOSE$ with $UPERF$, and then with $URATE$. The multiple regressions allow the effect of a close vote to be different for lagging vs. leading firms. Results are collected in Panel A of Table I.

The simple regressions show, by either the stock-price or bond-rating measure, significantly more vote reallocations for lagging firms. Closeness is not significant unconditionally, but it is for votes of less creditworthy firms, and at lower significance, lower-return firms. At the point of means, the effect on vote-borrowing for proposals of lagging firms is large, from 0.12% to 0.20% for firms with lagging stock returns, and from 0.16% to 0.28% for firms with lagging default risk. Therefore, the data support both dimensions of the hypothesis.

The remaining question is whether the two dimensions are significant conditional on each other. We can address this by including both in one regression. What we find, in regressions 4 and 5 in Panel A of Table I, is that $URATE$ and $UPERF$ enter significantly in the presence of $CLSPRD$, and that $CLSPRD$ enters positively and significantly when the other variable is $URATE$ and positively but insignificantly when it is $UPERF$. So the evidence is largely consistent with asymmetry of information and vote importance being independently significant.

III.B Relation to the Proposal and Firm Governance

Does vote trading reflect what the vote is about, or who proposed it? The chronology is potentially important here. Because the record date precedes the distribution of proxies, traders must decide whether to borrow or lend votes *before* the relevant proposals are publicized (Young, Millar, and Glezen, 1993). So the content of the proposals can affect the decision to borrow or lend only if it is somehow predictable, or privately known by some traders, as of the record date. In this section we address the influence of proposals on vote lending by relating vote-lending first to the content of the proposals, as revealed later in proxies, and then to information that is relevant to proposals, and that was definitely available to all investors on the record date.

The major categorization of proposals, as evidenced by the extensive literature analyzing shareholder proposals separately from management proposals (e.g., Gordon and Pound, 1993, Karpoff, Malatesta and Walkling, 1996, Wahal, 1996, Gillan and Starks, 2000) is into shareholder proposals on the one hand, and management proposals on the other. So all proposals are first sorted by their proposers into one group of 212 shareholder proposals, and another of 1575 management proposals. We then subdivide these groups into external, internal and compensation proposals, as described in Section II, and we flag them with the indicator variables *EXTERN*, *INTERN* and *COMP*. Proposals that do not fall into exactly one category score zero on all three and so are captured by the intercept. We run one regression of *XLOAN* on *EXTERN*, *INTERN* and *COMP* for shareholder proposals and one for management proposals, and we report the results as REG1 on the left and right sides, respectively, of Panel B, Table I.

The regressions turn up just one statistically significant relation: when management proposes a change in compensation, more votes change hands. Such proposals would intuitively be salient, but we cannot tell if traders knew on the record date that this issue would come up.

What voters *can* know on the record date is the firm's *current* state of corporate governance. This is a likely influence on the content and significance of upcoming proposals, so our empirical question is whether it influences the vote trade. One way to find out is to relate *XLOAN* to a corporate-governance index. The index of Gompers, Ishii and Metrick (2003) is useful for this purpose because it reduces a firm's array of provisions to one number, where a higher number indicates that a firm's provisions are less shareholder-friendly, or in other words, that management is more entrenched. Since entrenchment reduces shareholders' indirect control of firms through management, it increases the importance of direct control through proposals, so our hypothesis that vote trading increases with vote importance predicts a positive relation between entrenchment and *XLOAN* among shareholder proposals.

Among management proposals the prediction is less clear, since it is unclear how entrenchment should affect the importance of proposals that management chooses to put to a vote. In recent work, however, Weber, Joos and Balachandran (2003) find that "poorly-governed firms are more likely to adopt equity-based compensation plans without shareholder approval,"¹² and conclude that in general, management avoidance of putting decisions to vote grows as governance worsens. Though their measure of governance differs from the index we use, this suggests that the importance of management proposals, and therefore the reallocation of votes, should decline as the index increases.

We determine the relation of vote trading to managerial entrenchment by first defining *CGINDEX_{*i*}* to be the Gompers, Ishii, and Metrick (2003) measure of corporate governance for

¹² The quote is from the abstract of Weber, Joos and Balachandran (2003).

the firm associated with proposal i . For management and shareholder proposals separately we first regress $XLOAN$ on $CGINDEX$ alone, and then we add in the category indicators. Results are labeled REG 2 and REG 3, respectively, in Panel B of Table I.

Entrenchment enters every time, and indeed, reallocation of votes for shareholder proposals goes up and reallocation for management proposals goes down as entrenchment increases. There is still a separate effect of management proposals regarding compensation, though at lower significance.

III.C How abnormal lending influences the voting outcome

The economically important consequence of vote borrowing is its effect on outcomes. We do not directly observe how the borrowed votes are cast, but we can observe how the variation in borrowed votes relates to the variation in outcomes. To this end we define FOR_i and $AGAINST_i$ to be the percentage vote for and against proposal i and we regress it first on just $XLOAN$, and then to allow the relation to differ across categories, we regress it on the category indicators and $XLOAN_i$ interacted with the category indicators, and also with the dummy $OTHER$ which indicates proposals that do not fall in the three categories. There are two regressions for shareholder proposals and four for management proposals which control for the fact that FOR and $AGAINST$ are constrained between zero and 100; results are in Table II.¹³ Note we do not include regressions of $AGAINST$ on $XLOAN$ for shareholder proposals since in this case all votes are out of votes cast and there are no abstentions so $AGAINST=100-FOR$.

Lending, we find, corresponds to support for shareholder proposals and opposition to management proposals. In the shareholder-proposal multiple regression, three of four proposal

¹³ The significance is robust if FOR and $AGAINST$ are transformed into unbounded variables as done in Young, Millar, and Glezen (1993).

types interacted with *XLOAN* come in positive, with external proposals showing a statistically significant relation. In the management-proposal multiple regression with *FOR* as the dependent variable, both compensation proposals and internal proposals enter negatively, with internal proposals entering significantly. Among management proposals, the significant relation is again to opposition. When the dependent variable is *AGAINST*, three of four interaction variables enter positively with both internal and compensation entering significantly. To close the loop with our earlier results in Panel B of Table I, we first found more lending associated with management proposals regarding compensation, and now we find evidence that the loaned votes are cast against these proposals. This associates vote-borrowing with a particular side of the vote, the positive side for proposals by shareholders, and the negative for proposals by management. This is the opposite side of the vote from that associated with broker votes in Bethel and Gillan (2002), who argue that brokers may have ulterior motives for siding with management. We argue that uncertain voters allow their votes to be borrowed, taking the chance that the borrowers' preferences are aligned with their own. We cannot know whether the lenders would have voted this way if they knew everything, but we find reason for them to believe that their borrowers are at least not aligned with management.

Does the support and opposition translate to victory and defeat? For a final test, we define *SHRWIN* as the 1 if shareholders win a vote and we regress this on *XLOAN* and proposal types. Shareholders are presumed to win if a shareholder proposal wins or a management proposal loses. In our sample, about 3.7% of the observations are shareholder wins, but this differs vastly between management and shareholder proposals; shareholders win only 2% of management proposals, compared to 17% of shareholder proposals. Because *SHRWIN* is a dummy variable, the last three columns of Table II are executed using probit analysis.

For both shareholder proposals and management proposals, vote reallocations significantly (with p-values of 5.1% and 5.3% respectively) increase the probability of a shareholder win. In the big probit model in the last column, we find that the interaction terms between excess lending and vote proposals are generally positive and weakly significant. These findings suggest an important role for vote trading in the reallocation of voting power.

III.D Vote Trading in the U.K.

Do other countries' equity markets host voting markets? We can address this question with the daily aggregate lending data from CRESTCO, the U.K. clearing firm. For the firms in our sample we have 352 Annual General Meetings (AGMs) and 68 Extraordinary General Meetings (EGMs) (10 of which coincide with AGMs, and are excluded from the AGM results) with lending data from 20 days before to 20 days after the record date. For each record date we calculate $(\text{Loaned Shares})/(\text{Shares in CRESTCO})$ for each of these 41 event days, and we average across event days. These averages are plotted, with one line for AGMs and one for EGMs, as Figure 6.

The graph makes two points. First, a sizable fraction of U.K. shares are on loan when they convey votes, over 4%. Second, the effect of votes on lending is weak for annual meetings, but strong for extraordinary meetings. As extraordinary meetings are likely related to significant corporate events, this is consistent with our US finding that vote lending goes up, not down, with the significance of the issues at stake.

V. Summary and Conclusion

A market for votes is not necessarily a good thing, but we argue that it addresses an important problem. In the model of Harris and Raviv (1988), a company maximizes its own value but does not maximize society's value when it floats its shares separately from its cash flows. We find that votes float separately from shares whether companies want this or not, but this may do more good than harm because it helps cure an inefficiency that is abstracted from in Harris and Raviv (1988) and related work. The vote market cures the inefficiency arising from votes being distributed differently from information about how to vote them. Transactions in votes can move shares to investors more willing and able to vote them properly. Of course, they can move votes to any hands at all and in principle could hinder governance, but the evidence here associates vote transfers with *less* support for incumbent management, which alleviates this concern.

We also argue that the lending market is the efficient venue for trading votes, and while we find no evidence of vote-trading in the spot market, we find clear evidence of it in the lending market. The price of these loans is the price charged for the votes, so it is intriguing that the price is zero. Investors are yielding their votes, not selling them, suggesting that information asymmetry is the cause. They would be better off voting in their interest if they knew how, so intuitively they don't know how. We find more evidence for this view in the cross section of record dates: as information about the firm grows more asymmetric, and as the vote grows more important, so does the quantity of reallocated votes. Because this quantity corresponds to support for shareholder proposals and opposition to management proposals, it does not appear that management or its allies use this market to subvert governance.

The U.S. market for votes operates in spite of regulation designed to frustrate it. Other major economies do not impose such regulation, so it stands to reason that their markets for votes are more robust, and consequently, the ratios of votes to shares that their issuers choose have even less to do with the ratios their investors experience. Our U.K. findings are suggestive in this direction. It could be that the benefits Grossman and Hart (1988) and Harris and Raviv (1988) identify for one-share-one-vote are thus not attainable, but it could also be that society is better off with votes reallocating to investors who know what they are doing.

References

Apfel, Robert C., John E. Parsons, G. William Schwert and Geoffrey S. Stewart, 2001, Short sales, damages and class certification in 10b-5 actions, NBER Working Paper 8618.

Bagehot, Walter (pseud.), 1971, The only game in town, *Financial Analysts Journal* (March/April), pp. 12-14.

Bethel, Jennifer E., and Stuart L. Gillan, 2002, The impact of the institutional and regulatory environment on shareholder voting, *Financial Management Journal*, 31(4), 29-54.

Blair, Douglas H., Devra L. Golbe, James Gerard, 1989, Unbundling the voting rights and profit claims of common shares, *Journal of Political Economy*, 97(2), 420-443.

Christoffersen, Susan, Chris Geczy, David Musto and Adam Reed, 2004, Cross-border taxation and the preferences of taxable and non-taxable investors: Evidence from Canada, *Journal of Financial Economics*, forthcoming.

Cole, Douglas R., 2001, E-proxies for sale? Corporate vote-buying in the internet age. *Washington Law Review* 76, 793-858.

D'Avolio, Gene, 2002, The market for borrowing stock, *Journal of Financial Economics*, 66(2-3), 271-306.

DeAngelo, Harry, and Linda DeAngelo, 1985, Managerial ownership of voting rights: A study of public corporations with dual classes of common stock, *Journal of Financial Economics* 14, 33-69.

Duffie, Darrell, Nicolae Garleanu and Lasse Heje Pedersen, 2001, Securities Lending, Shorting and Pricing, *Journal of Financial Economics*, 66(2-3), 307-339.

Easterbrook, Frank H. and Daniel R. Fischel, 1983, Voting in corporate law, *Journal of Law and Economics*, 26, 375-390.

Evans, Richard, Chris Geczy, David K. Musto and Adam V. Reed, 2002, Impediments to Short Selling and Option Prices, Wharton School and University of North Carolina Working Paper.

Fabozzi, Frank J. (ed), 1997, Securities Lending and Repurchase Agreements, Frank J. Fabozzi Associates, New Hope PA.

Feddersen, Timothy and Wolfgang Pesendorfer, 1996, The Swing Voter's Curse, *American Economic Review*, 86(3), p. 408-424.

Geczy, Chris, David K. Musto, and Adam V. Reed, 2002, Stocks are special too: An analysis of the equity lending market, *Journal of Financial Economics*, 66(2-3), 241-269.

- Gillan, Stuart L. and Laura T. Starks, 2000, Corporate Governance Proposals and Shareholder Activism: The Role of Institutional Investors, *Journal of Financial Economics*, 57(2), 275-305.
- Glosten, Lawrence and Paul R. Milgrom, 1985, Bid, Ask and Transaction Prices in a Specialist Market with Heterogeneously Informed Traders," *Journal of Financial Economics*, 14(1), 71-100.
- Gompers, Paul, Joy Ishii, and Andrew Metrick, 2003, Corporate governance and equity prices, *Quarterly Journal of Economics*, 118(1), p. 107-155.
- Gordon, Lilli A. and John Pound, 1993, Information, ownership structure, and shareholder voting: Evidence from shareholder sponsored corporate governance proposals, *Journal of Finance*, 48, 697-718.
- Grossman, Sanford J., and Oliver D. Hart, 1980, Takeover bids, the free-rider problem and the theory of the corporation, *Bell Journal of Economics* 11, 42-64.
- Grossman, Sanford J., and Oliver D. Hart, 1988, One Share-One Vote and the Market for Corporate Control," *Journal of Financial Economics*, 20, 175-202.
- Harris, Milton and Artur Raviv, 1988, Corporate governance: voting rights and majority rules, *Journal of Financial Economics*, 20, p. 203-235.
- Karpoff, Jonathon M., Paul H. Malatesta, and Ralph A. Walkling, 1996, Corporate governance and shareholder initiatives: Empirical evidence, *Journal of Financial Economics*, 42, 364-395.
- Manne, Henry G., 1964, Some theoretical aspects of share voting, *Columbia Law Review*, 64, 1427-1445.
- Maug, Ernst, 1998, Large Shareholders as Monitors: Is there a trade-off between liquidity and control? *Journal of Finance*, 53(1), p. 65-98.
- Maug, Ernst, How effective is proxy voting? Information aggregation and conflict resolution in corporate voting contests, Working Paper, Humboldt University.
- Maug, Ernst and Kristian Rydqvist, 2001, What is the function of the shareholder meeting? Evidence from the US proxy voting process, Working Paper.
- Neeman, Zvika and Gerhard O. Orosel, Corporate vote-trading as an instrument of corporate governance, Working Paper, Boston University.
- Pozen, Robert C., 1994, Institutional investors: The reluctant activists, *Harvard Business Review*, Jan-Feb, 140-149.

Securities and Exchange Commission, 1991, Short-selling activity in the stock market: Market effects and the need for regulation (Part 1), Eleventh Report by the Committee on Government Operations, Dec. 6, House Report 102-414, 102 Congress First Session.

Shleifer, Andrei, and Robert W. Vishny, 1986, Large shareholders and corporate control, *Journal of Political Economy* 94, 461-488.

Wahal, Sunil, 1996, Public pension fund activism and firm performance, *Journal of Financial and Quantitative Analysis* 31, 1-23.

Weber, Joseph, Peter R. Joos and Sudhakar V. Balachandran, 2003, Do voting rights matter: Evidence from the adoption of equity-based compensation plans. MIT Sloan School of Management Working Paper 4442-03.

Young, Philip J. and James A. Millar and G. William Glezen, 1993, Trading volume, management solutions, and shareholder voting, *Journal of Financial Economics*, 33, p. 57-71.

Zingales, Luigi, 1995, What determines the value of corporate votes? *Quarterly Journal of Economics*, 110(4), p. 1047-1073.

Zingales, Luigi, 1994, The value of the voting right: A study of the Milan stock exchange experience, *Review of Financial Studies*, 7(1), p. 125-148.

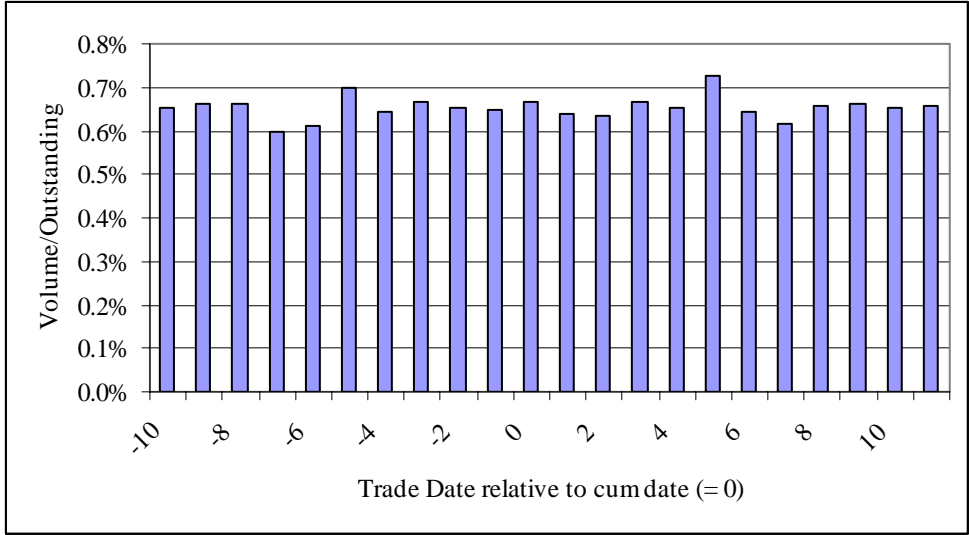


Figure 1. Spot-Market Volume around cum-vote date. Trade date (where cum-vote date is 0) is on the horizontal axis, and trading volume divided by shares outstanding is on the vertical axis. Sample is all 6186 cum-dates of CRSP stocks from 11/11/98 to 10/12/99.

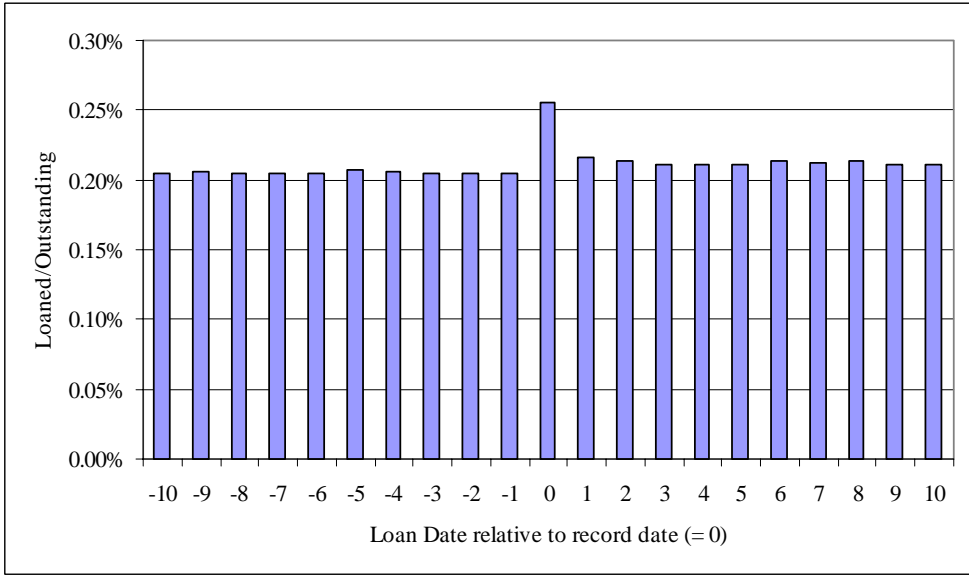


Figure 2. Loan-Market Volume around voting record date. Loan date (where record date is 0) is on the horizontal axis, and shares loaned by our data provider, divided by shares outstanding, is on the vertical axis. Sample is all 6186 record dates of CRSP stocks from 11/16/98 to 10/15/99.

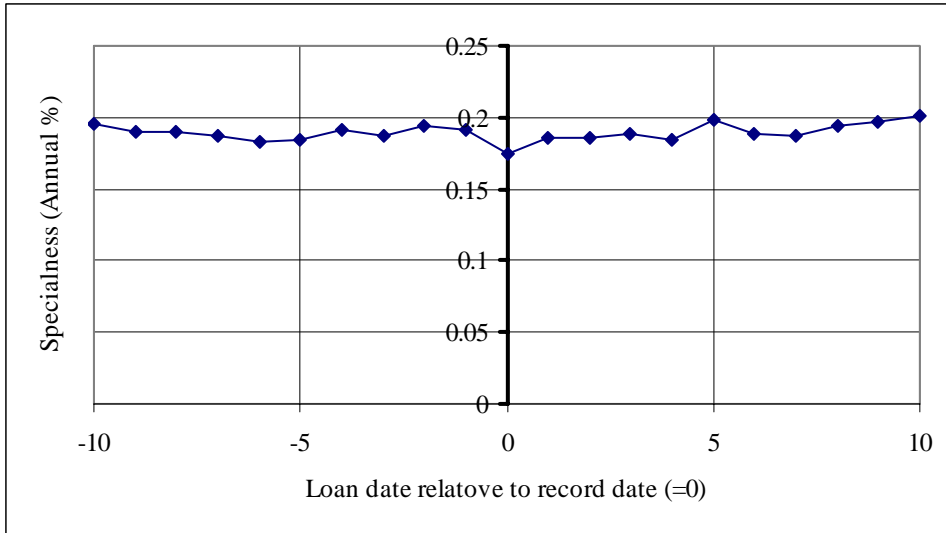


Figure 3. Loan Pricing around voting record date; Custodian Bank data. Loan date (where record date is 0) is on the horizontal axis, and specialness of loans by our data provider is on the vertical axis. The average for a given date is across those stocks with loans outstanding on that date. Sample is all 6186 record dates of CRSP stocks from 11/16/98 to 10/15/99.

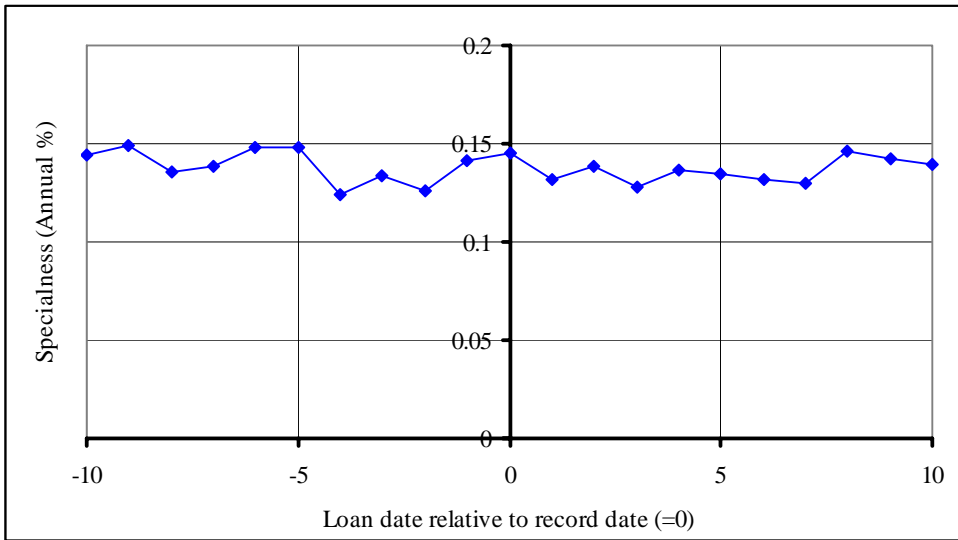


Figure 4. Loan Pricing around voting record date; Prime Broker data. Loan date (where record date is 0) is on the horizontal axis, and specialness charged by the prime broker is on the vertical axis. The average is across the same panel on each date. Sample is all 2908 record dates of Russell-3000 stocks from 11/16/98 to 10/15/99.

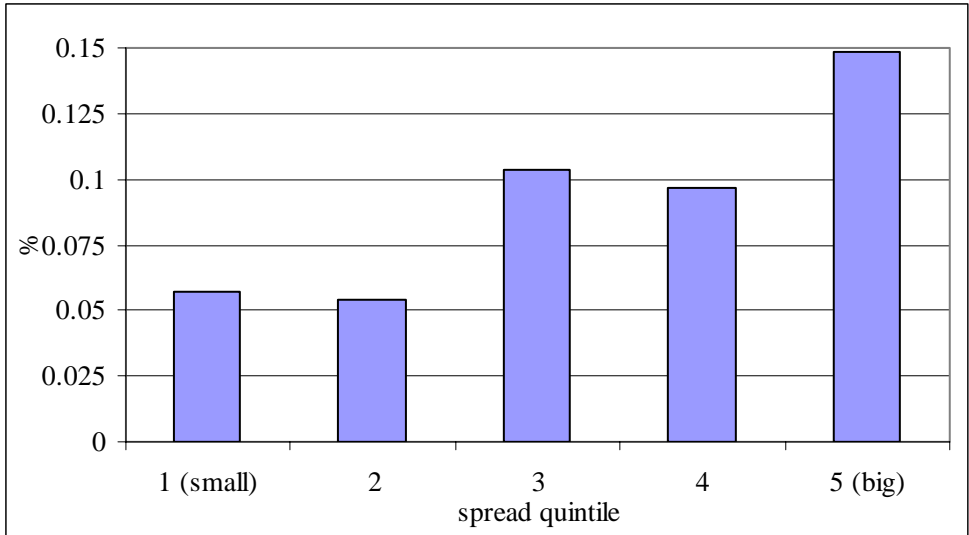


Figure 5. Excess Record-Date Lending, sorted by trading spread. Record dates are sorted by percentage closing spread in October 1998. Spread quintiles are on the horizontal axis and the average excess-record date lending for the quintile is on the horizontal axis.

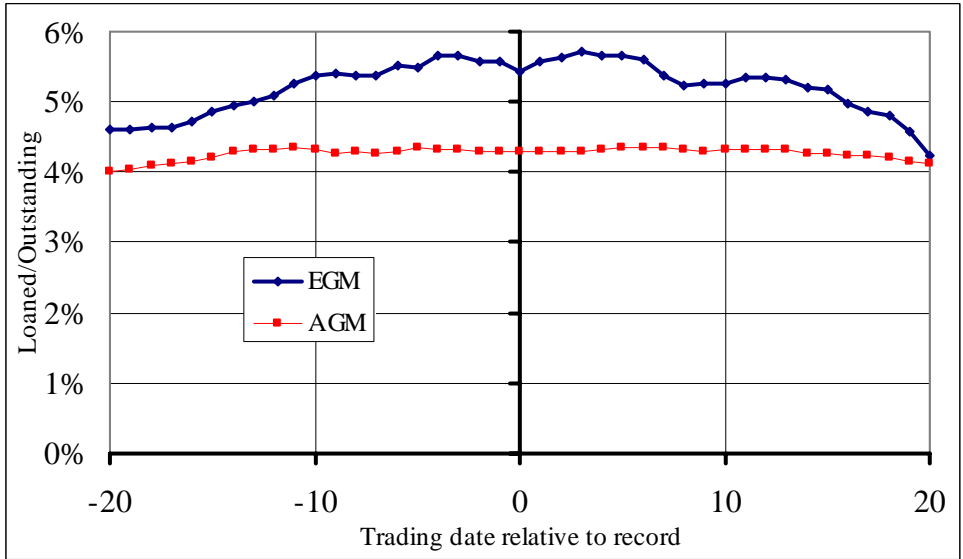


Figure 6. Record-Date Lending in the U.K. Loan date (where record date is 0) is on the horizontal axis, and loaned shares divided by total shares, as reported by the U.K. clearing firm CRESTCO, is on the vertical axis. Sample is all 352 annual general meetings (represented by the line AGM) and 68 extraordinary general meetings (EGM) from October 1, 2003 to November 1, 2004.

Table I
Dependent Variable is Excess Vote-Day Loan Volume

The sample is all nonroutine proposals of large firms, as defined and collected by the Investor Responsibility Research Center, such that there are 10 trading days before and after the record date of the proposal within the period 11/1/98 through 10/31/99. In each regression the dependent variable is *XLOAN*, defined as the number of shares loaned on the record date of a proposal minus the average number of shares loaned over the ten trading days before and the ten trading days after, divided by the number of shares of the firm outstanding, and multiplied by 100 (i.e. in percentage terms). *CLSPRD* is the average closing spread (in percent of average bid and offer price) for the stock in October 1998. *UPERF* is 1 if the firm's total stock return for the year ending 10/31/98 was below the average total return of stocks with the same two-digit SIC code, and is 0 otherwise. *URATE* is 1 if the firm's long-term senior bond rating, as of 9/30/98, was below the median rating for firms with the same two-digit SIC code. *CLOSE* is 1 if the vote for the proposal was within 5% of the vote required for passage, and is 0 otherwise. *EXTERNAL*, *INTERNAL* and *COMP* are 1 if the proposal is an External, Internal or Compensation issue (as defined in the text), respectively, and are 0 otherwise. *CGINDEX* is the corporate governance index where a larger value indicates a weakening of corporate governance as defined by Gompers, Ishii, and Metrick (2003). T-statistics are below, in italics.

Panel A

	REG 1	REG 2	REG 3	REG 4	REG 5	REG 6	REG 7	REG 8
Intercept	0.067 <i>5.52</i>	0.073 <i>9.73</i>	0.08 <i>7.94</i>	0.067 <i>5.56</i>	0.057 <i>3.50</i>	0.072 <i>9.45</i>	0.073 <i>9.56</i>	0.0833 <i>8.10</i>
CLSPRD	1.86 <i>2.44**</i>			0.636 <i>0.75</i>	2.56 <i>2.01**</i>			
UPERF		0.05 <i>3.83**</i>		0.056 <i>3.13**</i>		0.049 <i>3.79**</i>	0.045 <i>3.38**</i>	
URATE			0.082 <i>4.15**</i>		0.123 <i>4.97**</i>			0.0727 <i>3.60**</i>
CLOSE						0.031 <i>1.04</i>	-0.0047 <i>-0.12</i>	-0.074 <i>-1.57</i>
UPERF*CLOSE							0.0888 <i>1.45*</i>	
URATE*CLOSE								0.1976 <i>2.10**</i>
Observations	1168	1734	848	1141	710	1734	1734	848

Panel B

	Shareholder Proposal			Management Proposal		
	REG 1	REG 2	REG 3	REG 1	REG 2	REG 3
Intercept	0.0818 <i>1.69</i>	-0.061 <i>-1.93</i>	-0.089 <i>-1.66</i>	0.069 <i>5.45</i>	0.144 <i>6.37</i>	0.130 <i>5.22</i>
External	0.0502 <i>0.92</i>		0.089 <i>1.69*</i>	-0.83 <i>0.406</i>		0.005 <i>0.14</i>
Internal	-0.030 <i>-0.60</i>		0.034 <i>0.72</i>	-0.003 <i>-0.08</i>		-0.004 <i>-0.09</i>
Compensation	-0.039 <i>-0.74</i>		0.036 <i>0.73</i>	0.035 <i>2.34**</i>		0.024 <i>1.52*</i>
CG Index		0.0129 <i>3.95**</i>	0.011 <i>3.41**</i>		-0.0068 <i>-2.74**</i>	-0.007 <i>-2.79**</i>
Observations	212	209	209	1575	1333	1333

** 5% significance

* 10% significant

Table II
Votes For and Against and Voting Outcomes of Proposals

The sample is all nonroutine proposals of large firms, as defined and collected by the Investor Responsibility Research Center, such that there are 10 trading days before and after the record date of the proposal within the period 11/1/98 through 10/31/99. In the first four columns, the dependent variable is FOR, defined as the percentage of votes for the proposal. In the fifth and sixth columns, the dependent variable is AGAINST, defined as the percentage of votes against the proposal. The dependent variable last six columns is a dummy variable indicating if a shareholder has won a proposal, SHRWIN, defined as 1 if votes FOR are greater than votes NEEDED in a shareholder proposal (SP) and votes FOR are less than votes NEEDED in a management proposal (MP). XLOAN is defined as the number of shares loaned on the record date of a proposal minus the average number of shares loaned over the ten trading days before and the ten trading days after, divided by the number of shares of the firm outstanding, and multiplied by 100 (i.e. in percentage terms). EXTERNAL, INTERNAL and COMP are 1 if the proposal is an External, Internal or Compensation issue (as defined in the text), respectively, and are 0 otherwise. There are also four interaction variables included which multiply EXTERNAL, INTERNAL, COMP, and an indicator for all other funds by XLOAN. The estimates in columns one to six control for the bounded nature of FOR and AGAINST. The estimates in columns seven to nine use probit analysis and the marginal effects of each variable are provided in the last three columns. T-statistics are below, in italics.

	DepVar FOR		DepVar FOR		DepVar AGAINST		DepVar SHRWIN			Marginal Effects		
	SP		MP		MP		SP	MP	All	SP	MP	All
Intercept	27.39	11.16	82.39	83.23	12.64	7.04	-1.05	-2.11	-1.97	0.166	0.019	0.019
	<i>17.65</i>	<i>1.75</i>	<i>218.59</i>	<i>121.80</i>	<i>36.55</i>	<i>11.88</i>	<i>-9.14</i>	<i>-26.15</i>	<i>-15.09</i>			
XLOAN	26.13**		-1.05		3.73**		1.20*	0.43*		0.30	0.020	
	<i>2.71</i>		<i>-0.79</i>		<i>3.05</i>		<i>1.95</i>	<i>1.94</i>		<i>1.95</i>	<i>1.95</i>	
External		24.16**		-0.63		-4.17**			0.89**			0.093**
		<i>3.36</i>		<i>-0.33</i>		<i>-2.55</i>			<i>4.23</i>			<i>2.46</i>
Internal		23.69**		-9.63**		2.96*			0.96**			0.10**
		<i>3.58</i>		<i>-4.76</i>		<i>1.68</i>			<i>5.39</i>			<i>3.11</i>
Compensation		-0.57		-0.74		9.08**			-0.47**			-0.025**
		<i>-0.08</i>		<i>-0.89</i>		<i>12.58</i>			<i>-2.50</i>			<i>-2.36</i>
Ext*XLOAN		29.76**		4.20		-0.58			0.79			0.037
		<i>2.48</i>		<i>0.66</i>		<i>-0.10</i>			<i>1.43</i>			<i>1.40</i>
Int*XLOAN		-7.46		-14.91**		10.04**			1.03*			0.049*
		<i>-0.49</i>		<i>-2.72</i>		<i>2.11</i>			<i>1.85</i>			<i>1.77</i>
Comp*XLOAN		39.99		-2.08		2.79**			0.60*			0.028**
		<i>1.48</i>		<i>-1.27</i>		<i>1.96</i>			<i>1.91</i>			<i>1.97</i>
Other*XLOAN		36.13		3.90		0.47			-0.12			-0.006
		<i>1.30</i>		<i>1.49</i>		<i>0.21</i>			<i>-0.21</i>			<i>-0.21</i>

** is significant at the 5% level

* is significant at the 10% level.